



24 Volt 24 NV & 24 ELC Series

The **24 NV** and **24 ELC Series** are offered where a reliable, long-life, low maintenance wet battery unit is required. These series are designed for remote capability and offer a wide selection of battery capacities.

UL Listed

Complies with NEC, Life Safety Code and OSHA. Approved use in the Commonwealth of Pennsylvania.

Wet Refillable Batteries

- Wet Nickel Cadmium
- Wet Lead Calcium

Wet nickel cadmium batteries are advantageous for areas that experience extreme ambient temperature fluctuations.

Standard Features

Reliability

The 24 NV and 24 ELC Series comes complete with a 3-year full warranty.

Unit Data

Constructed of 18 gauge steel with an off-white baked enamel finish. Removable front panel with battery viewport. Furnished standard with two EF-18 heads, with one 9 watt lamp per head.

PulsePlus Charger

PulsePlus circuitry offers 120/277 volt input 60 Hz., 0.3 Amp (other inputs available), fused output circuit(s), dual diagnostic indicator lights, temperature compensation, sealed relay, low voltage battery disconnect, brownout protection and lockout (automatic battery connect).

Optional Features

Description

	Add Suffix
Ammeter.....	A
Voltmeter.....	V
Lamp disconnect switch.....	LD
Time delay (specify 5, 10 or 15 minutes)	TD
Non-standard input voltage.....	Specify
Cord set – 120 volt.....	CP
Cord set – special voltage (specify plug type)	XP
Automatic unit cyler	AUC

Accessories (order as a separate item)

Mounting shelf (cabinet D)	MP12
Wire guard (cabinet D)	WG4

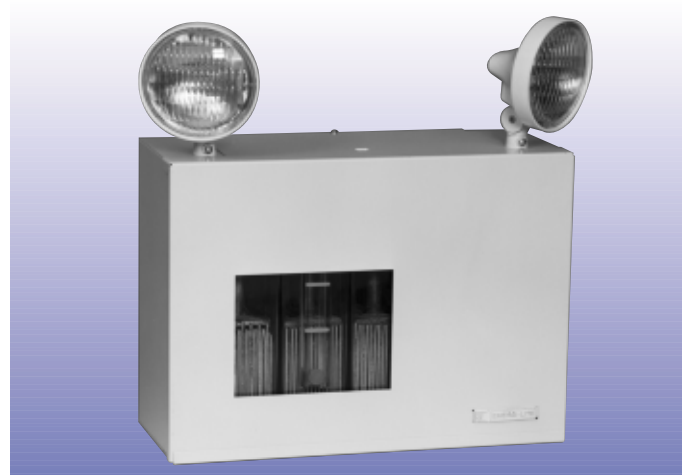
How To Order (example)

For standard units without options only order Series, Battery, Watts and Heads
24EL - C - 400 - 2 - *(ZN) - WG4

Series	Battery Type	Watts	Heads	Lamp Option	Option
	wet lead calcium	for 90 min.	on unit	24V 9W Incandescent	wire guard

Includes standard lamp

Options are added to units by listing suffix at end of model #
**see lamp data sheet in lighting fixture section for other lamp wattages.*



Unit Rating Chart

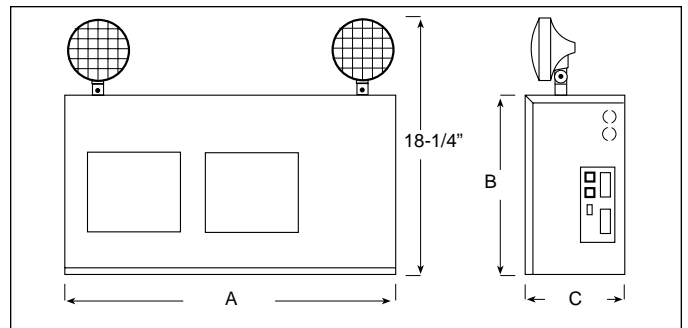
Furnished standard with two 9 watt High Intensity Incandescent lamps.

UNIT EQUIPMENT -WITH REMOTE CAPABILITY							
Wet Refillable Battery Types	D.C. Voltage	Model Number	*Watts to 87 1/2% of rated battery voltage				Cabinet Size
			1 1/2 hrs.	2 hrs.	4 hrs.	8 hrs.	
Wet Nickel Cadmium	24	24NV144-2	144	120	52	30	E
	24	24NV164-2	164	140	64	40	E
	24	24NV200-2	200	180	80	45	E
	24	24NV324-2	324	280	120	72	E
	24	24NV372-2	372	300	132	90	E
Wet Lead Calcium	24	24ELC400-2	400	320	185	93	D

*National Electrical Code Specification

Outline and Dimensions

Dimensions are approximate and subject to change.



Cabinet Size	Dimensions		
	A	B	C
D	27"	12 3/8"	7 1/4"
E	27 1/4"	12 1/4"	11 1/4"